

## Storage Facilities: Pumping P-323

Design of Prefabricated Units or On-site built Pumping Installations for Storage Facilities for e.g., Fuel or other Products.

PED – Pressure Directive:

Design according to PED and detail design according EN13480.

Design:

P-Engineering designs the following for the Installation:

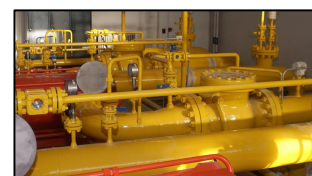
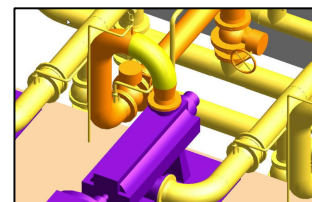
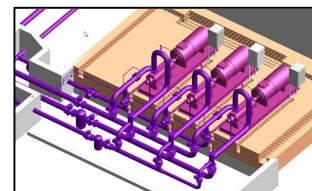
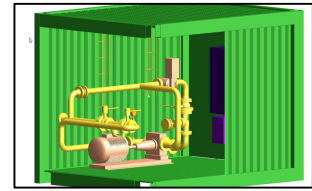
- PFD & PID
- Process Calculations
- Equipment Sizing (Pumps etc.)
- Pipe Design including of Pipe Isometric for fabrication
- Support & Pipe Structures
- Cleaning Pig Stations
- Instrumentation
- Painting / Surface Treatment
- MCC's and Electrical Supply
- Cabling – Power, Signal & IT
- Cabling Project (Power & Signal)
- Control System – General Spec., Func. Description, SCADA Spec.
- Equi-Potential Bonding
- CE-Marking (Risk Analysis, Technical Dossier)
- ATEX Design & Ex-Marking (Risk Analysis, Classification, Dossier)
- Fire Fighting System (Foam)

P-Engineering uses e.g.

- [AVEVA PDMS](#) Software for 3D design
- [CONVAL®](#) for Control Valve Design
- [PIPE-FLO®](#) Pump Sizing and Pressure Loss

Contact Information:

Christian Pallesen; +45 2526 8805; [cp@p-engineering.dk](mailto:cp@p-engineering.dk)



*Pictures of Fuel Pump Installations – on Military and Naval Installations*