

Steam Boiler: Industrial Plants

P-311

Industrial Boiler Plants for generation both Saturated and Superheated Steam for various Industrial purposes. Design of e.g.

- Fuel System (Oil, N-Gas etc.)
- Feed Water System
- Water Treatment
- Steam System with Manifold, Start-up Arrangement etc.
- Condensate Collection System
- Flue Gas Ducting System
- Stacks with Foundation
- Support Structures
- Platform and Access Ways
- Electrical Supply System
- Cable tray, Busbars etc.

Design Package includes

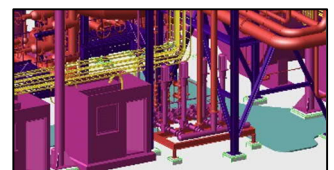
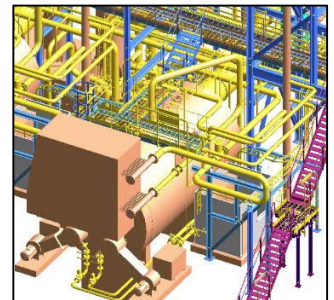
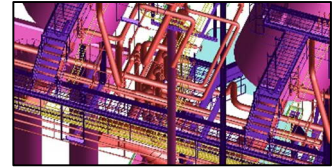
- Piping Design acc. EN13480
- Vessels Design acc. EN13445
- Steel acc. Eurocode
- Platforms acc. Eurocode
- Access Stairs and Ladders
- Instrumentation
- Control System – Specification, Functional Descriptions, SCADA specification.
- Pumping Sizing and Selection
- MCC's and Electrical Supply
- Cabling – Power, Signal & IT

P-Engineering uses e.g.

- [AVEVA PDMS](#) Software for 3D design
- [ROHR2](#) for Pipe Flexibility investigations
- [Pipeflo®](#) for Piping and Pump Sizing
- [DXT](#) Software EN13445 and EN13480

Contact Information:

Christian Pallesen; +45 2526 8805; cp@p-engineering.dk



Pictures from Intermediate Power Plant built in Scotland. Engineering done on behalf of [Aker Solution \(UK\)](#) and [Danstoker \(DK\)](#).