

## Pharma: Black Utility Design P-202

Design of Black Utilities for Life Science, Pharmaceutical, Biotech, Life-Science and API-plants:

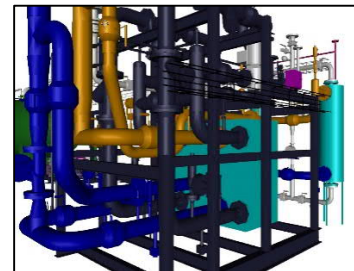
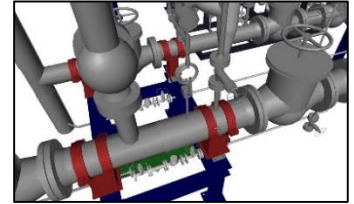
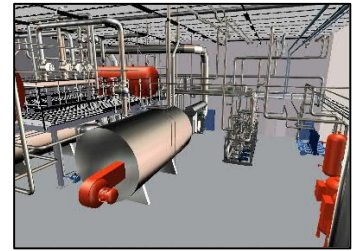
- Raw Steam (Superheated & Saturated) & Condensate
- Heating – Production & Distribution
- Water Distribution (Raw Water and Building Utility)
- Kill Plants – Batch and Continuous System
- Sewage Collection
- Technical Water – Hot & Cold
- Utility Make-up System
- Ethanol/Methanol – Waste
- Gasses – Nitrogen etc.
- Lye and Acid – Industrial Grade
- Air – Industrial – Equipment Spec. and Distribution
- Process Exhaust System

Design of above system with full process design package (Process, PID, 3D & Detail Design) or a Detail Design Package for manufacturing of Piping and Support including design/specification of Tanks, Vessels and Equipment.

P-Engineering has references from e.g., [GE HealthCare](#) (DK, SE & NO), [pK Chemicals](#) (DK), [NovoNordisk](#) (DK), [AGC Biologics](#) (DK), [Bavarian Nordic](#) (DK), [Arla Foods](#) (DK), [DuPont](#) (DK) and [Gentofte Hospital](#) (DK)

Contact Information:

Christian Pallesen; +45 2526 8805; [cp@p-engineering.dk](mailto:cp@p-engineering.dk)



*Pictures for various Pharma projects for Heating, Steam & Condensate, Acid, and Hot Tap Water Production.*