

Vessel Design acc. to EN13445

P-161

Design of Pressure Vessels, Buffer Tanks, Distillation Columns etc. according to EN13445 and the Pressure Directive in general.

The Design of Pressure Vessel includes calculation and design of

- Shell / Body
- Bottom and Top
"Korbform" DIN 28013 or "Klöpperform" DIN 28011
- Nozzle – Internal Pressure and Static & Dynamic Load for adjacent piping
- Lifting Lugs
- Hatches and Manholes
- Consoles for Support (Hung Vessels)
- Support Legs (Standing Vessels)
- Internal baffle plates for Cooling Buffer Tank
- Lugs for mounting external item (e.g. cable trays, lugs for bonding or Instruments).

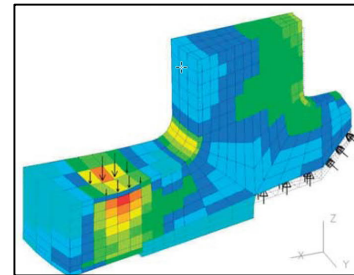
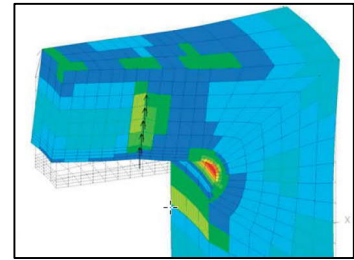
The design work covers Calculation, Arrangement and Detail Drawings for manufacturing of the Vessel.

P-Engineering uses e.g.

- [DXT](#) EN13445 Software for Vessel Design
- FEM – Tools for Special Cases

Contact Information:

Christian Pallesen; +45 2526 8805; cp@p-engineering.dk



FEM analysis for an autoclave for [iNanno Institute](#) @ University of Aarhus (DK). Design for Super Critical Processes 600 barg @ 600°C with gold lining.



Internal "bells" from Ethanol Distillation columns design for 10 barg @ 150°C for a Dextran Factory (DK).